


Internet Explorer Settings before Registering Digital Certificate

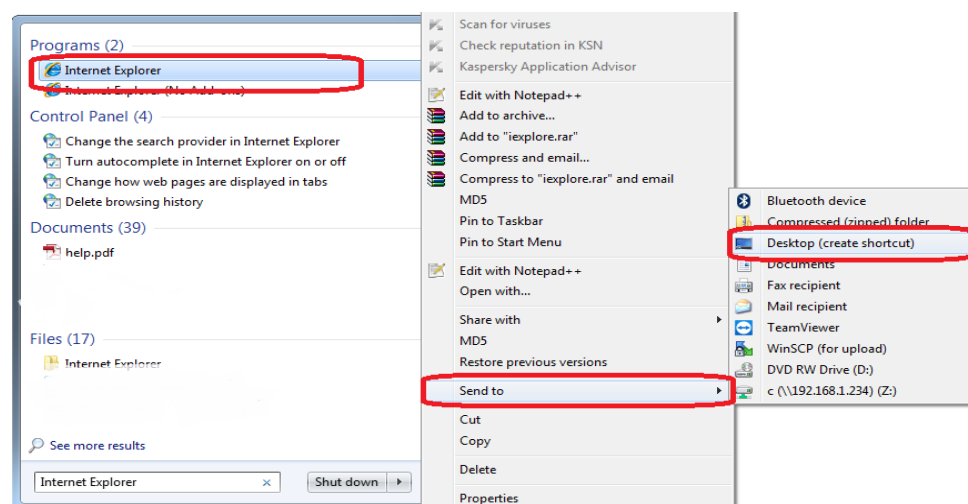
1. Compatibility Check.

(Use O/s Windows 7 and above)

- Internet Explorer Ver 8.0 & above.
- Cipher Strength 128 bit and above.

2. Create Internet Explorer's Short Cut icon on the Desktop or Pin it to the Task bar

1. Click on the windows  logo on the Key board search for "Internet Explorer", right click on the Internet Explorer option and choose "Send To" and then select "Desktop (create shortcut)".

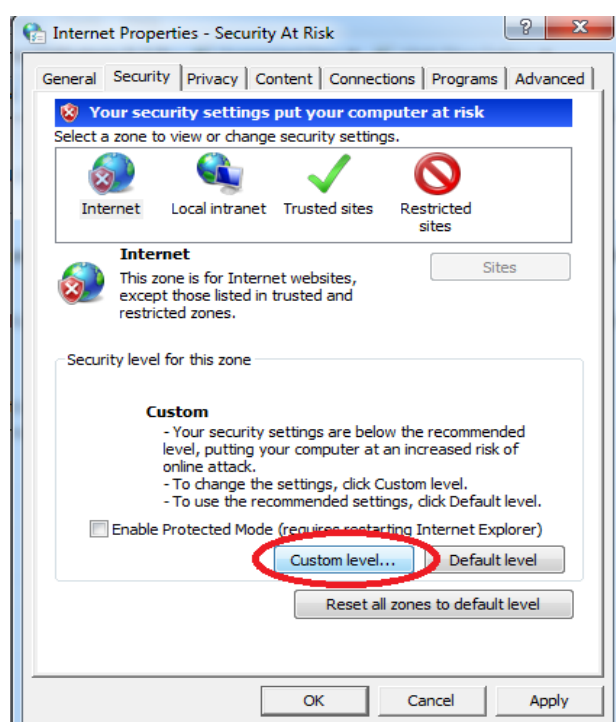
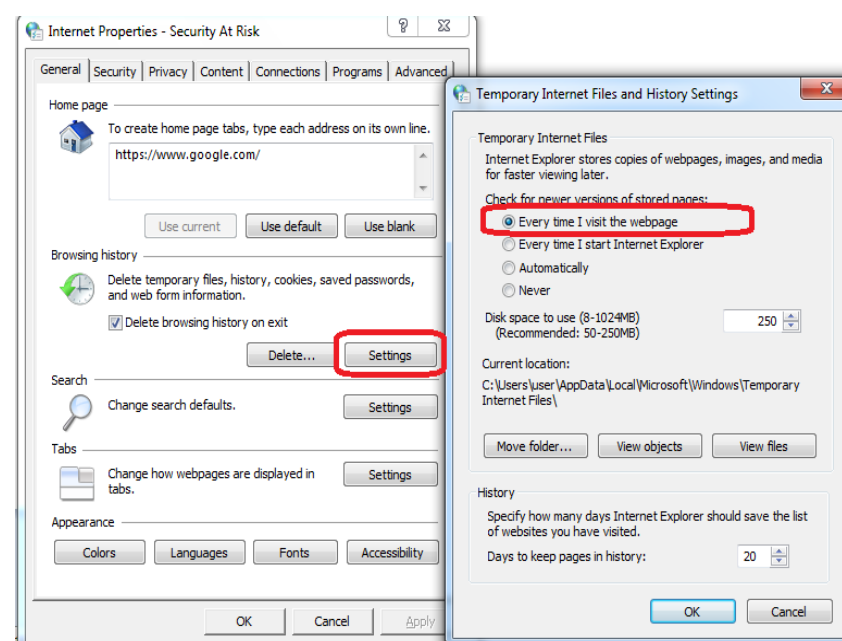


3. Internet Options Settings

Go to Internet Explorer --->Tools -----> Internet Options

a) Go to the "General" tab

- Click on "Settings" Button
- Click on Every time visit to the web page.(First Option)
- Click OK



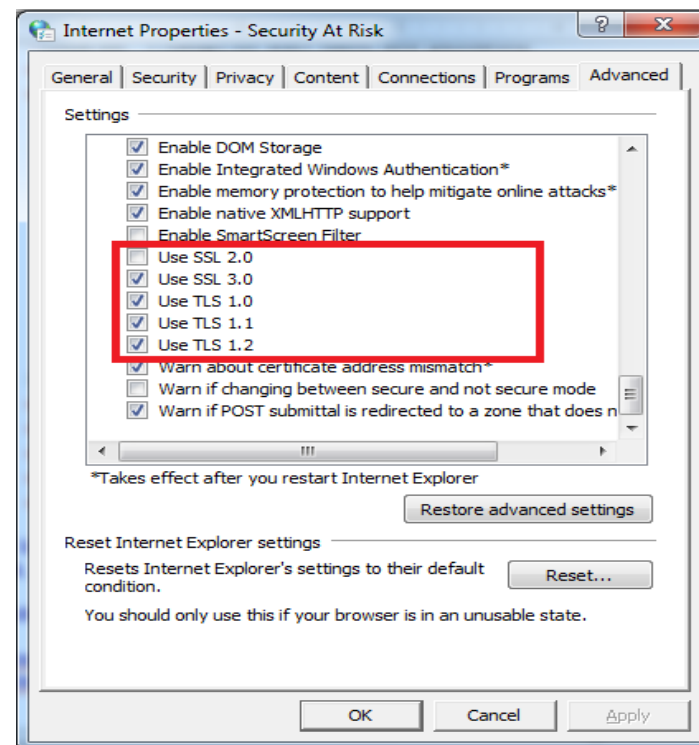
b) Click on "Security"

Remove tick on Enable protected mode (Available only in Win 7 onwards)

i) Select Internet

- Click on "Custom Level" Button.
- In all options wherever PROMPT /ENABLE option is there it should be clicked.
- In the last option (User Authentication : Logon)
- Click on "Prompt for user name and password"
- Click "OK".
- Click "Yes" on warning " Are you sure you want to change the security settings for this zone "

- c) Click on “Advanced”
- Under Security (Scroll Down)
 - Deselect Use SSL 2.0 and Select TLS as shown in the figure
 - Click “Apply”
 - Click “OK”.



4. Download and Install the Signing Control

a) If you are using 32-bit operating system then Click the link below to download SnorkelClientSuite32.zip in a folder, after the file is extracted double click to install the extracted files.

<http://stockholding.com/SnorkelClientSuite32.zip>

b) If you are using 64-bit operating system then Click the link below to download SnorkelClientSuite64.zip in a folder, after the file is extracted double click to install the extracted files.

<http://stockholding.com/SnorkelClientSuite64.zip>

c) If you are trying to login using any browser other than Internet Explorer (like Chrome or Edge browsers) please download wsSnorkletInstall by clicking on the link below, double click the file to install:

<http://stockholding.com/wsSnorkletInstall.exe>

5. After registering the certificate (Process is explained in the registration document) use the following URL to Access the Site.

For Transnet NSDL: <https://transnet.shcil.com/net/debit/main>

For Transnet CDS https://transnet.shcil.com/net/debitcdsl/cdsl_main